

## Sima Lotfi

### Associate

**Phone Number:**

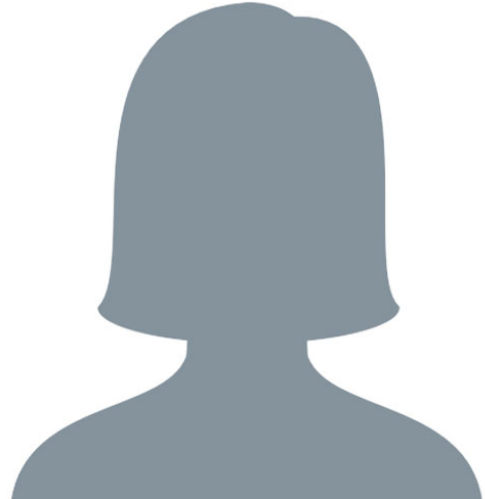
(412) 471-8815

**Fax Number:**

(412) 471-4094

**Email:**

slotfi@webblaw.com



## Bio

Sima is an Intellectual Property attorney with a background in systems neuroscience and neuronal circuitry mapping, having completed dual degrees from Wellesley College in Neuroscience and Philosophy. In May 2020, Sima earned her JD from the University of Pittsburgh School of Law. Prior to law school, Sima worked as a neuroscience researcher for the University of Pittsburgh. During law school, Sima competed in four external moot competitions, including the Giles S. Rich patent law moot competition for which her team advanced to become national quarter-finalists.

## Bar Admissions

Pennsylvania, 2020

## Education

Duquesne University School of Law, Pittsburgh, PA, 2020

J.D.

Pittsburgh Journal of Technology Law and Policy, Managing Editor

Pitt Law Women's Association, Vice President

Honors: Order of Barristers, CALI Award for Excellence in Evidence, CALI Award for Excellence in Business Organizations, CALI Award for Excellence in Biotechnology Law

Wellesley College, Neuroscience, Philosophy, Wellesley, MA, 2013

B.A.

Honors: Sigma Xi Scientific Research Honor Society